



THE IPSWICH MEN'S SHED INC

Location: 3A Mining Street Bundamba Q 4304 Phone The Shed 07 3436 5857	Postal Address: 3A Mining Street Bundamba 4304 ipswichmensshed@hotmail. comweb : ipswichmensshed.org.au
---	---

"Shoulder to Shoulder"

President: Terry Carter **Vice President:** Laurie Caldwell

Junior Vice President: Dennis Sinnott

Secretary: Brian Parker **Treasurer:** Ian Weier

Registrar: Ted Wedmaier; **Executive Officer Electrical:** Darryl Edwards

Fund Raising/Purchasing: Bob Lewitz

Committee: John Humphries; Ron Bopf; Ian Ross; Roger Overell; Bob Lewitz

Patron: Kylie Stoneman; **Future Development:** Bob Edyvean

Membership fees \$35 for 1 year – **daily fees \$3 plus \$4.00 lunch**

Open Tuesday, Thursday & Saturday 9am-2pm

Dear Members –

Welcome to all new members in April and May - we trust you will enjoy your time here at the best Shed around. As we head into May, we look forward to new tasks and experiences. Remember if you want a new project or interest, we on the Committee are always here to listen.

Whilst visiting the Hobsons Bay Shed in Melbourne (320 Members) I saw lots of projects that we can do and I will share those when time permits. One idea was a vintage car group, a cycling group, photography group and a musical instrument making group, as well as a fully equipped car workshop.

Thanks to Laurie and all who assisted during my break, I know that the Shed is in good hands while I undertake an extended cruise on 17th May-26th June.

On August 1st the AGM will take place, providing an opportunity for all members to take on any role on the Committee that they may wish, so take a risk and get out of that comfort zone and learn a new skill.

A BBQ at Bunning's tomorrow Sunday 7/5 and if you have an hour, we would appreciate a hand. Ring Bob on 0478 166 621

Regards

Terry

Printed by Cr Kylie Stoneman

A GLIMPSE AT IPSWICH PAST:



For those who are new to Ipswich and new to the shed, our illustrious leader and President Terry Carter was (until relatively recently), a businessman and company manager for a local business which closed its doors in 2005. The company was an electrical retail store named Hoey and Ploetz.

To learn how Hoey and Ploetz began; and to follow its journey through the years, here is a brief outline of this long standing local family business which survived for over 50 years.

In 1948 Hoey and Ploetz commenced operations as a partnership between Harry Ploetz, a 5th generation Ipswichian and his brother in law Allen Hoey. Harry and Allen had met at the Army Trade Training Centre at Woolloongabba in 1942 and were posted as army electricians to the same unit during the war. They served together for over 2 years in the AIF in New Guinea. Upon discharge from the army after the war they both completed 2 years trade training at the North Ipswich Railway Workshops to gain their trade certificate.

Having developed a close friendship from their army years they also shared a dream of one day running their own electrical contracting business. Allen, who was a farm boy from Allora on the Darling Downs before the war, had met Harry's younger sister Shirley when he was on leave from New Guinea in May 1944. Allen and Shirley were married three and a half years later in Ipswich in late 1947 and Harry married Joan in April 1949 at St Pauls Church in Ipswich.

So, in 1948, just as soon as they had gained their trade certificates they left behind what would have been secure lifelong employment with Queensland Railways to take their chances by starting out in business for themselves with nothing more than their own skills, enthusiasm and a motor bike and side car to carry their tools and ladders. They set up their electrical contracting business under Harry's mother's house in Delacey Street, North Ipswich and they travelled widely chasing contracting work as far from Ipswich as the Brisbane Valley, Lowood, Esk, Toogoolawah as well as districts in the Lockyer and Fassifern Valleys. Fortunately there was plenty of work to keep the new business busy because this was the first time for many of the farm houses and their dairy's to be able to connect to electricity.

The contracting business continued to prosper and in 1954 they decided to expand into retailing by purchasing a small radio and small appliances shop in East Street located near the Palais Royal hotel. The plan was that Harry would manage the retail part of the business while Allen would continue with the contracting. Retailing presented exciting opportunities for the developing business because a wide range of sophisticated kitchen and household appliances were quickly coming on to the market, such as refrigerators, mix masters, toasters, electric jugs, vacuum cleaners as well as twin tub and wringer washing machines. The introduction of TV into Queensland was also only a few short years away. However on the very day that the contract was signed to purchase this shop, Allen had a serious stroke and was off work for several months. Unfortunately, with his permanent physical disability, he was never able to return to contracting work.

Undeterred by this set-back, the family business continued to grow with the employment of a number of electricians, apprentices and salesmen, including the very popular Bill Gayler who many Ipswich people will remember as a first rate salesman and gentleman. He remained employed by Hoey and Ploetz for nearly 30 years. By 1961 the electrical business had moved a few doors up East Street into its corner location at Limestone Street where it remained for the next 25 years.

The introduction of black and white TV into Queensland in 1959 proved a profitable venture for Hoey and Ploetz with many customers keen to purchase their first TV...even though the first TVs were still very expensive!

Business continued to do well in contracting with the 1950s and 1960s housing boom requiring house wiring and re-wiring work for electricians who would work in closely with builders. The Retail part of the business continued to benefit too from the manufacture of innovatively designed household appliances.

In 1961 the business was invited to join a recently formed Queensland electrical buying group, Beta Stores and Harry was appointed one of their early directors. He continued in this role for nearly 20 years. The business continued to grow and in 1973 Terry Carter, Allen and Shirley's son in law, was employed in the business, firstly as a storeman, then as a salesman and eventually as manager.

Like many Ipswich CBD businesses and thousands of residents, the devastating 1974 Australia Day flood hit Ipswich. Hoey and Ploetz was seriously affected. The business, located on the corner of Limestone and East streets went 7ft under water.

As things turned out, the substantial business losses incurred by the 1974 flood were able to be partly recovered over the next 3-4 years when Colour TV came on the market. Hoey and Ploetz continued in its current structure until 1982 when Harry took over the electrical servicing and contracting division and Allen maintained the retail division. Harry became ill soon after and passed away in 1985. The Service Division was subsequently sold and the Hoey family continued to trade in Ipswich for a number of years as Hoey and Ploetz Sales Pty Ltd. In 1992 the business relocated to Top of Town where it continued to trade successfully under the leadership of Terry and his wife, Shona.

Next month we visit the end of Hoey and Ploetz – now Beta Electrical and follow Terry's progress toward joining the Ipswich Men's Shed.

EVERYBODY, SOMEBODY, NOBODY AND ANYBODY – (thank you Ken



Everson for this submission) -

'Once there were four people, named Everybody, Somebody, Nobody and Anybody. When there was an important job to be done, Everybody was sure Somebody would do it, but Nobody did it. When Nobody did it, Everybody got angry because Anybody could have done it. So it ended up that Everybody blamed Somebody when Nobody did what Anybody could have done in the first place'.

WHICH BODY ARE YOU?

PC NEWS: WINDOWS DEFENDER:

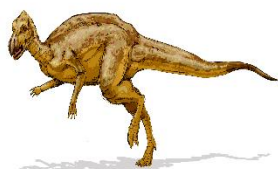
When using Windows 10, the Windows Defender anti-malware application automatically disables itself if you install another anti-malware program. In the Anniversary Update, however, Windows Defender has a "Limited Periodic Scanning" feature. It can automatically turn itself on and scan your system occasionally, even if you have another antivirus program installed.

Windows Defender gives you a second layer of protection, or a "second opinion" on whether your computer is infected.

Just head to Settings, Update & Security, Windows Defender and turn on the "Limited Periodic Scanning" feature to enable this. This option will only appear if you have another antivirus program installed, and it isn't on by default.

This helpful information is provided by Bonny Chattergoon of Chattergoon ICT Services. Ph: 0431062752.

Interesting Facts:



- The first scientifically named dinosaur was called Scrotum Humanum because it looked like a giant pair of human testicles.
- Dinosaurs didn't roar, they mumbled and cooed.
- Neanderthals are shown as slouching because the first one to be reconstructed happened to have arthritis.
- Sabre-toothed tigers were not closely related to the tiger of the modern day cat.



New Shed Project???

Should do nicely for the Vice President to get round the shed in – volunteer

p

SHED MADE!





YARD WORK!





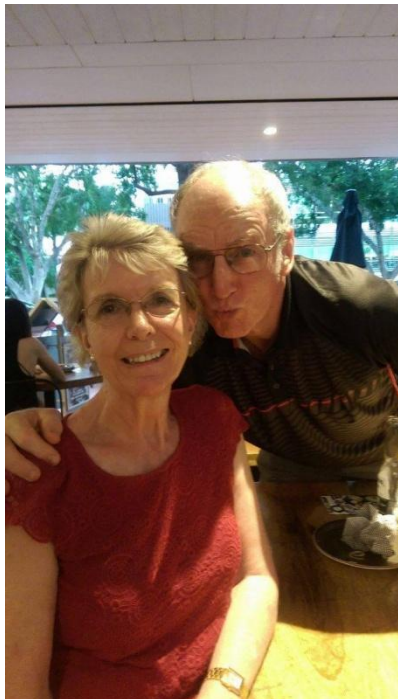
MEN AT WORK!

TED AND KEN





CHRIS POWELL MAKING A PLANTER BIN !



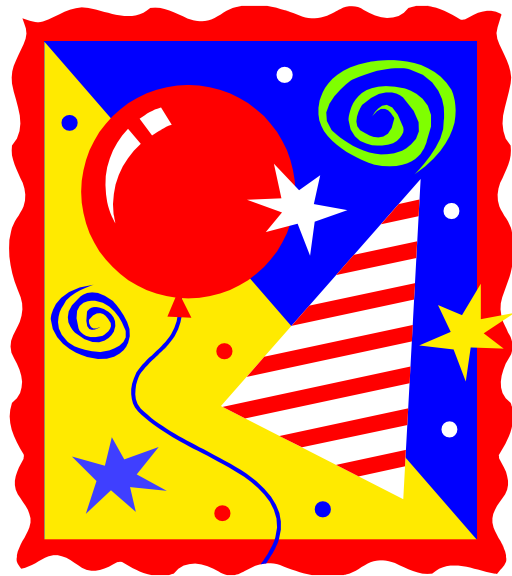
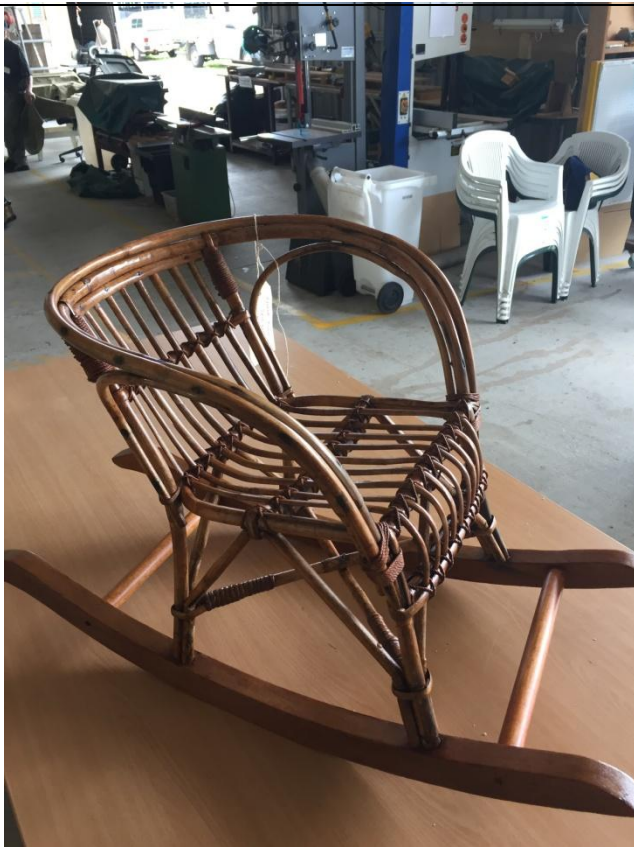
COL ON RECENT HOLIDAY



TERRY'S HOME IN MAY 2017



BOB'S NEW PROJECT



MONTHLY PRIZE ! BRIAN'S CHAIR



**WHO AM I?
I COACHED THE LIONS FOOTBALL TEAM!**



Shed Winter Woollies (+logo)	
Fleecy vest	\$30
Fleecy jumper with ½ zip	\$35
Fleecy jumper full zip	\$40
Shed badge	\$5
Shed shirt (no pocket)	\$40
Shed shirt (with pocket)	\$45

Order through Bob Lewitz or Laurie Caldwell
(Cash with order)

Ipswich Embroidery 32817551-Glenda

Email shop@ipswichembroidery.com.au



EARLY DAYS!

SHEDDER OF THE MONTH FOR MAY

DAVE WERNOWSKI



WELL DONE DAVE !

AMSA CONFERENCE SEPT 29-1ST OCTOBER

Cabot's 7th National Men's Shed Conference, being held at Mantra on ViewHotel, SurfersParadise.

The 2017 Conference theme '*Onwards and Upwards*' will include traditional conference content of sharing information on establishing Men's Sheds, however in recognising the ever changing Shed environment, the 2017 gathering will have a particular focus on operational matters such as governance, financial management and the best operational practices. The conference will encourage delegates to share and talk in order to discover the best practices to keep the shed movement momentum continuing onward and upward. The streams will be presented by experienced Shedders, professional service providers and the highly skilled AMSA team.



Welding hazards

Because the gas metal arc welding process uses electricity, you need to take proper precautions at all times to prevent the possibility of electric shock or burns. Safety hazards from the process include:

- electric shock
- fumes
- hot metal burns
- hot slag burns
- sparks
- arc rays (radiation burns).

Electric shock

Avoid electric shock by:

- wearing dry insulated boots
- wearing dry leather gloves
- never cooling welding gun in water
- working on a dry insulated floor where possible
- inspecting leads and welding gun for damaged insulation before use.

**Repair or replace
defective cables
immediately.**



If there is an accident, turn off the power to the circuit first. If this isn't possible, clear the victim from the electrical source using dry non-conducting material.

